

COMPACT UTILITY EQUIPMENT

 **Ditch Witch**[®]



ATTACHMENTS

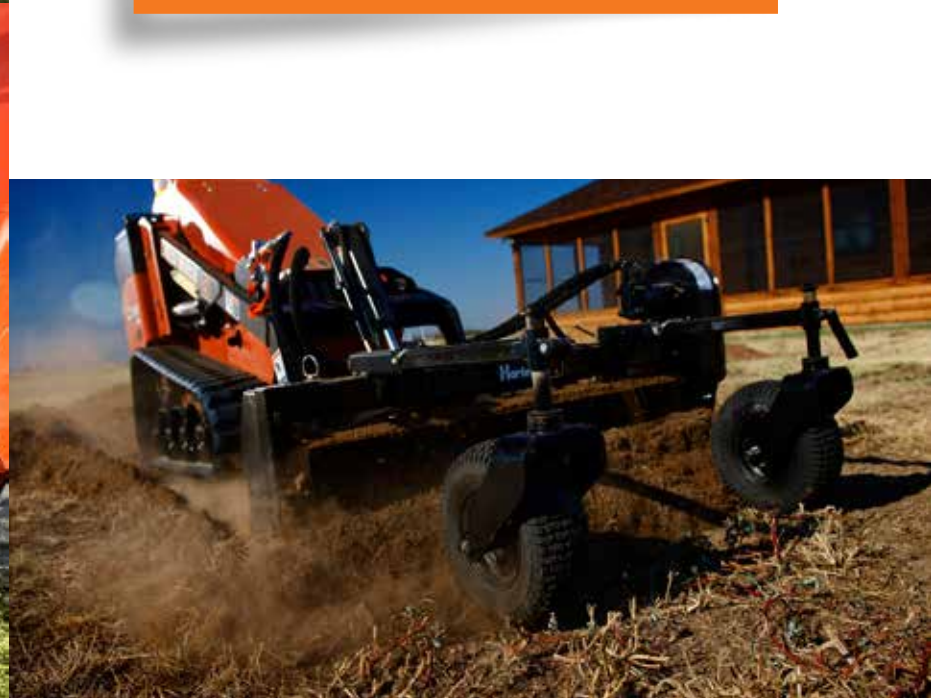
COMPACT UTILITY ATTACHMENTS

1

Attachments are easy to operate with each machine's convenient, functional levers.

2

Quick-connect attachment plate on all mini skid steers minimizes the effort in transforming each compact utility machine from a plow to a trencher, a tiller, an auger, or so many other options.



Ditch Witch® mini skid steers are designed to drive a wide range of interchangeable attachments. Thanks to each machine's quick-connect attachment plate, changing out attachments is fast, simple and minimizes downtime. Hook up to a power box rake and prepare seedbeds. Attach a backhoe and dig a koi pond. Connect an auger and plant a row of trees. Whatever you do, you can find a Ditch Witch compact utility attachment to make the job easier.

WE'RE IN THIS TOGETHER.

COMPACT UTILITY ATTACHMENTS

LIGHT MATERIALS BUCKET



DIMENSIONS	U.S.	METRIC
Height	27.5 in	699 mm
Length	33 in	838 mm
Width	44.5 in	1.13 m
Weight	285 lb	129 kg

STANDARD BUCKETS



DIMENSIONS	U.S.	METRIC
36-IN BUCKET		
Height	17 in	432 mm
Length	22.4 in	569 mm
Width	36 in	914 mm
Weight	149 lb	68 kg
Capacity (volume)	3.4 ft ³	0.09 m ³
44-IN BUCKET		
Height	17 in	432 mm
Length	22.4 in	569 mm
Width	44 in	1.1 m
Weight	172 lb	78 kg
Capacity (volume)	4.2 ft ³	0.01 m ³
52-IN BUCKET - 1/4 CUBIC YARD		
Height	16.8 in	427 mm
Length	19.6 in	498 mm
Width	52 m	1.32 m
Weight	203 lb	92 kg
Capacity (volume)	6.75 ft ³	0.19 m ³
52-IN BUCKET - 1/3 CUBIC YARD		
Height	16.8 in	427 mm
Length	27.8 in	706 mm
Width	52 m	1.32 m
Weight	243 lb	110 kg
Capacity (volume)	9 ft ³	0.25 m ³

4-IN-1 BUCKETS



DIMENSIONS	U.S.	METRIC
44-IN BUCKET		
Height	20 in	508 mm
Length	27.5 in	698 mm
Width	42.5 in	1.1 m
Weight	268 lb	122 kg
Capacity (volume)	5 ft ³	0.14 m ³
52-IN BUCKET		
Height	19.5 in	495 mm
Length	27.5 in	698 mm
Width	52 in	1.32 m
Weight	312 lb	141 kg
Capacity (volume)	7 ft ³	0.2 m ³

GRAPPLE FORKS



DIMENSIONS	U.S.	METRIC
42 IN		
Height	25.5 in	648 mm
Length	31.25 in	794 mm
Width	42 in	1.07 m
Weight	270 lb	122 kg
Grapple opening	29 in	737 mm
54 IN		
Height	25.5 in	648 mm
Length	31.25 in	794 mm
Width	54 in	1.37 m
Weight	295 lb	134 kg
Grapple opening	29 in	737 mm

HYDRAULIC TREE FORK



DIMENSIONS	U.S.	METRIC
Height	12.5 in	318 mm
Length	47 in	1.19 m
Width	25 in	635 mm
Weight	145 lb	66 kg
Fork height	3 in	76 mm
Fork length	43 in	1.09 m
Fork width	3 in	76 mm
Width between forks, min	4 in	102 mm
Load, max	220 lb	100 kg
Cross-section, triangular movement range		
Left	38°	
Right	0°	

Specifications are general and subject to change without notice. If exact measurements are required, equipment should be weighed and measured. Due to selected options, delivered equipment may not necessarily match that shown.

PLANETARY AUGER DRIVER



	U.S.	METRIC
DIMENSIONS		
Weight, w/out auger	154 lb	70 kg
Auger diameter, max	30 in	762 mm
Speed		
42 rpm	8 gpm	30 l/min
52 rpm	10 gpm	38 l/min
63 rpm	12 gpm	45 l/min
Torque		
HIGH SPEED, LOW TORQUE		
2,100 psi (145 bar)	929 ft-lb	1584 N-m
2,500 psi (172 bar)	1,106 ft-lb	1885 N-m
3,000 psi (209 bar)	1,327 ft-lb	2263 N-m
LOW SPEED, HIGH TORQUE		
2,100 psi (145 bar)	1,168 ft-lb	1584 N-m
2,500 psi (172 bar)	1,391 ft-lb	1886 N-m
3,000 psi (209 bar)	1,669 ft-lb	2263 N-m

HYDRAULIC TREE SHEAR



	U.S.	METRIC
DIMENSIONS		
Height	42 in	1.06 m
Length	26.6 in	676 mm
Width	36.7 in	932 mm
Weight	393 lb	178 kgf
Shear force, max	41,610 lbf	18874 kgf
Shear capacity, max	7 in	178 mm

CARRY-ALL LEVELER



	U.S.	METRIC
DIMENSIONS		
Height	16 in	406 mm
Length	36 in	914 mm
Width	49 in	1.24 m
Weight	170 lb	77 kg

ROTADAIRON® SOIL CULTIVATOR



	U.S.	METRIC
DIMENSIONS		
Height	22 in	559 mm
Length	48 in	1.22 m
Width	45.9 in	1.17 m
Weight, w/out seed box	430 lb	195 kg

PLATE COMPACTOR



	U.S.	METRIC
DIMENSIONS		
Height	20 in	508 mm
Length	18 in	457 mm
Width	41 in	1.04 m
Weight	519 lb	235 kg
Vertical force	5,500 lb	2495 kg
Frequency	1,900 vpm	
Hydraulic flow	8 gpm	30 l/min

TILLER



	U.S.	METRIC
DIMENSIONS		
Height	18 in	457 mm
Length	28 in	711 mm
Width	51 in	1.3 m
Weight	320 lb	145 kg
Tilling depth	2.5-5 in	64-127 mm
Tilling width, max	40 in	1.02 m
Tilling speed @ 12 gpm (45 l/min)	180 rpm	180 rpm
Number of tines	36	

HARLEY® RAKE AUTOMATIC OR MANUAL FRAME SWING



	U.S.	METRIC
DIMENSIONS		
Height	24 in	610 mm
Length	51 in	1.3 m
Width	58 in	1.5 m
Weight	510 lb	231 kg
Roller width	48 in	1.2 m
Hydraulic flow, max	8 gpm	30 l/min

Specifications are general and subject to change without notice. If exact measurements are required, equipment should be weighed and measured. Due to selected options, delivered equipment may not necessarily match that shown.

ROTARY BROOM



DIMENSIONS	U.S.	METRIC
Height	26-32 in	660-812 mm
Length	46 in	1.2 m
Width	51.3 in	1.3 m
Weight	420 lb	190 kg
Speed	180 rpm @ 12 gpm	180 rpm @ 45 l/min

BACKFILL BLADES



DIMENSIONS	U.S.	METRIC
48-IN BACKFILL BLADE		
Height	20.8 in	432 mm
Length	19 in	483 mm
Width	48 in	1.2 m
Weight (w/hydraulic swing)	195 lb	88 kg
67-IN BACKFILL BLADE		
Height	17 in	381 mm
Length	22.75 in	578 mm
Width	67.25 in	1.71 m
Weight	290 lb	132 kg
46-IN 6-WAY BACKFILL BLADE		
Height	16.95 in	430 mm
Length	22.1 in	561 mm
Width	46.75 in	1.19 m
Weight	257 lb	117 kg
Angle, left/right	30°	
67-IN 6-WAY BACKFILL BLADE		
Height	16.95 in	430 mm
Length	22.1 in	561 mm
Width	67.25 in	1.71 m
Weight	310 lb	141 kg
Angle, left/right	30°	

BACKFILLER CENTER, LEFT & NARROW



DIMENSIONS	U.S.	METRIC
Height	15.5 in	394 mm
Length		
Center	56.5 in	1.44 m
Left	56.5 in	1.44 m
Narrow	49 in	1.24 m
Width	17 in	178 mm
Weight		
Center	300 lb	136 kg
Left	300 lb	136 kg
Narrow	250 lb	113 kg
Auger diameter	12 in	305 mm
Auger width		
Center	46.5 in	1.18 m
Left	46.5 in	1.18 m
Narrow	41 in	1.04 m

BACKHOE



DIMENSIONS	U.S.	METRIC
Height, max	67 in	1.7 m
Clearance	9.5 ft	2.9 m
Width	45 in	1.2 m
Weight, w/12-in bucket	712 lb	323 kg

TRENCHERS



DIMENSIONS	U.S.	METRIC
24-IN TRENCHER		
Trench depth, max	24 in	610 mm
Trench width, max	6 in	152 mm
Weight, w/2-ft (610-mm) boom	260 lb	118 kg
30-IN TRENCHER		
Trench depth, max	30 in	762 mm
Trench width, max	6 in	152 mm
Weight, w/2-ft (610-mm) boom	375 lb	170 kg
Digging chain speed		
Standard	317 fpm	97 m/min
Low speed/high torque	200 fpm	61 m/min
36-IN TRENCHER		
Height	36 in	914 mm
Length, w/4-ft (1.21-m) boom	98 in	2.49 m
Width	62 in	1.58 m
Weight, w/4-ft (1.21-m) boom	1,140 lb	517 kg
Trencher depth, max	52 in	1.32 m
Recommended trench depth	48 in	1.22 m
Trench width, min to max	6-8 in	150-200 mm
Recommended boom angle	55°	
Spoils discharge reach	23 in	584 mm
Digging chain speed	457 fpm	139.14 m/min

TRENCHER OFFSET WIDE



DIMENSIONS	U.S.	METRIC
Trench depth, max	55.5 in	1.41 m
Trench width, max	12 in	305 mm
Weight, w/2-ft (610-mm) boom	550 lb	250 kg
Digging chain speed		
Standard	211 fpm	64.2 m/min
Low speed/high torque	256 fpm	78 m/min

Specifications are general and subject to change without notice. If exact measurements are required, equipment should be weighed and measured. Due to selected options, delivered equipment may not necessarily match that shown.

VIBRATORY PLOW



	U.S.	METRIC
DIMENSIONS		
Height	18.8 in	478 mm
Length	30.5 in	775 mm
Width	24.3 in	617 mm
Weight, w/out plow blade	375 lb	170 kg
Cover depth, max	13.5 in	343 mm
Plow-in depth, nominal	6-12 in	152-305 mm
Bullet diameter, max	3 in	76 mm
Feed blade, inside diameter	1 in	25 mm
Plow vibrator	12 gpm	45 l/min

MULTI-TASK TOOL



	U.S.	METRIC
DIMENSIONS		
Height	11.5 in	292 mm
Length	40 in	1.02 m
Width	24 in	610 mm
Weight	120 lb	54 kg
Lifting capacity, max	900 lb	408 kg
Ripping depth	10 in	254 mm

PALLET FORK



	U.S.	METRIC
DIMENSIONS		
Height	30 in	762 mm
Fork length	36 in	914 mm
Spread		
Min	6.5 in	165 mm
Max	34 in	864 mm
Weight	227 lb	103 kg

ROTO WITCH® DRILLING ATTACHMENT



	U.S.	METRIC
DIMENSIONS		
Height	10.1 in	257 mm
Length	21.5 in	546 mm
Width	36.5 in	927 mm
Weight	136 lb	62 kg
Bore/backreamer hole diameter	1.75-12 in	45-300 mm
Speed		
No load	142 rpm @ 13.5 gpm	142 rpm @ 51 l/min
2,000 psi (140 bar)	130 rpm @ 13.5 gpm	130 rpm @ 51 l/min
Torque @ 2,500 psi (140 bar)	560 ft-lb	759 N-m

JACKHAMMER



	U.S.	METRIC
DIMENSIONS		
Height	48.75 in	1.2 m
Weight	209 lb	95 kg
Tool diameter	1.76 in	45 mm
Strikes per minute	1,200	
Energy per stroke	177 ft-lb	240 N-m
Hydraulic flow, max	9 gpm	35 l/min
Working pressure, max	1,740 psi	120 bar



CHOOSING THE RIGHT ATTACHMENT

Matching the attachment to the right compact utility machine is important to the success of your landscaping, construction, utility, or demolition task—and also important to keeping your machine and the attachment operating at peak performance. For example, the hydraulic needs of the attachments must be compatible with the hydraulic capabilities of the machine. Refer to your operator's manuals to determine the proper direct-performance correlation between the machine and the attachment. And whether you're

buying or renting, you can always depend on a knowledgeable, highly trained Ditch Witch® equipment dealer to help you make the right decisions.

For quick and easy attachment information from your desktop, laptop or mobile device, visit ditchwitch.com/mini-skid-steer/attachments.